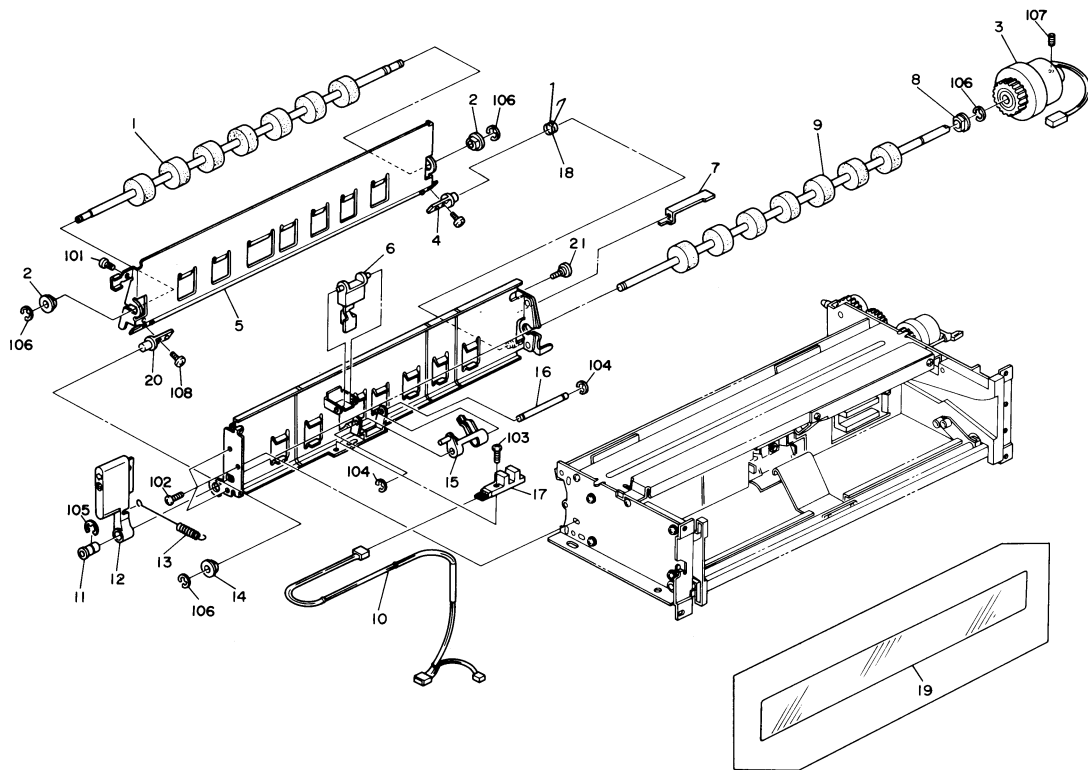


PS210 (A415)

1. Paper Bank I (A415)	2
2. Paper Bank II (A415)	4
3. Paper Bank III (A415)	6
4. Paper Bank Board (A415)	8
5. Paper Band Harness (A415)	10
Parts Index	13

1. PAPER BANK I (A415)

April 1,'87



1. PAPER BANK I (A415)

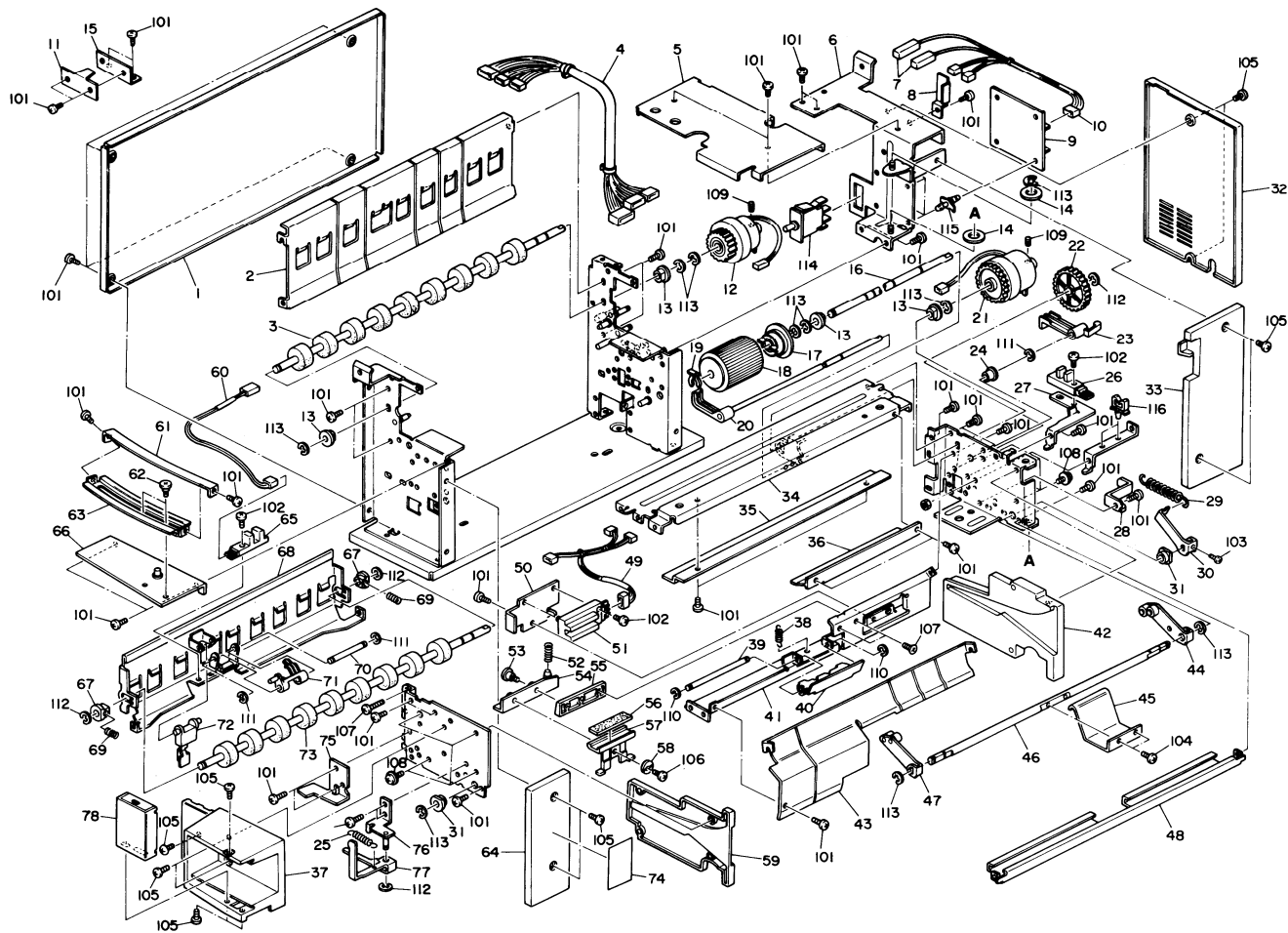
April 1,'87

Index No.	Parts No.	Description	Q'ty Per Assembly
	A415 1210	Expansion Relay Unit	1
*	A415 8610	Installation Procedure - English	1
*	A415 8625	Installation Procedure - 5 Languages	1
*	A415 4226	Multi-Lingual Decal	1
1	Af02 0025	Expansion Relay Roller	1
2	5053 0447	Bushing - M6	2
3	5922 5300	Relay Feed Clutch	1
4	5920 2396	Rear Feed Guide Shaft	1
5	A415 2392	Relay Feed Guide	1
6	5922 2062	Sensor Actuator	1
7	5215 2634	Paper Feed Clutch Holder	1
8	5403 2617	Bushing - Cleaning Roller	1
9	5920 2421	Expansion Relay Drive Roller	1
10	5920 5210	Expansion Relay Harness	1
11	5920 2430	Guide Plate Bushing	1
12	A415 2431	Guide Plate Lever	1
13	5920 2432	Spring - Guide Plate	1
14	5403 2617	Bushing - Cleaning Roller	1
15	A008 4804	Sensor Feeler	1
16	5922 2067	Feeler Shaft	1
17	5205 5250	L.E.D. Sensor Types	1
18	5920 2433	Spring - Guide Plate	1
19	5920 2418	Mylar Seal - Guide Plate	1
20	5920 2395	Front Feed Guide Shaft	1
21	5419 5714	Stepped Screw - M4	1

Index No.	Parts No.	Description	Q'ty Per Assembly
101	0314 0060W	Philips Pan Head Screw - M4 x 6	
102	0434 0080W	Tapping Pan Head Screw - M4 x 12	
103	0314 0120W	Philips Pan Head Screw - M4 x 12	
104	0720 0080E	Retaining Ring - M3	
105	0720 0060E	Retaining Ring - M6	
106	0720 0050E	Retaining Ring - M5	
107	0574 0040E	Hexagon Headless Set Screw - M4 x 4	
108	0313 0040W	Philips Pan Head Screw - M3 x 4	

2. PAPER BANK II (A415)

April 1, '87



2. PAPER BANK II (A415)

Index No.	Parts No.	Description	Q'ty Per Assembly
1	5920 2340	Left Cover	1
2	A415 2252	Left Paper Guide	1
3	5920 2251	Feed Relay Drive Roller	1
4	5922 5200	Interface Harness	1
5	5920 2310	4th Feed Upper Stay	1
6	5920 2280	Rear Side Plate - 4th Feed	1
7	5920 5204	5th Feed Harness	1
8	5920 2279	Bank Docking Bracket	1
9	5920 5101	Paper Bank Board	1
10	5920 5204	5th Feed Harness	1
11	5922 2670	Expansion Docking Plate	2
12	5922 5300	Relay Feed Clutch	1
13	5053 0223	Bushing - 8mm	4
14	5920 2293	Nylon Washer	2
15	5922 2671	Expansion Docking Bracket	2
16	5922 2236	Feed Roller Shaft	1
17	5215 2618	Feed Roller Hub	1
18	5215 2619	Feed Roller	1
19	5215 2621	Snap Ring - M6	1
20	5922 2340	Paper End Feeler	1
21	AX21 0002	Magnetic Clutch	1
22	5922 2099	Gear - 32T	1
23	5215 2626	Paper End Actuator	1
24	5443 2668	Bushing	1
25	5920 2144	Spring - Lock	1
26	5205 5250	L.E.D. Sensor Type S	1
27	5922 2237	Sensor Bracket	1
28	5920 2151	Actuator Plate	1
29	AA06 0080	Spring - Lower Lift	1
30	A008 2664	Pressure Arm	1
31	5215 2662	Bushing	2
32	A415 2450	Rear Cover - 220V/240V	1
32	A415 2455	Rear Cover - 115V	1
33	A415 2330	Rear Right Cover - 220V/240V	1
33	A415 2335	Rear Right Cover - 115V	1

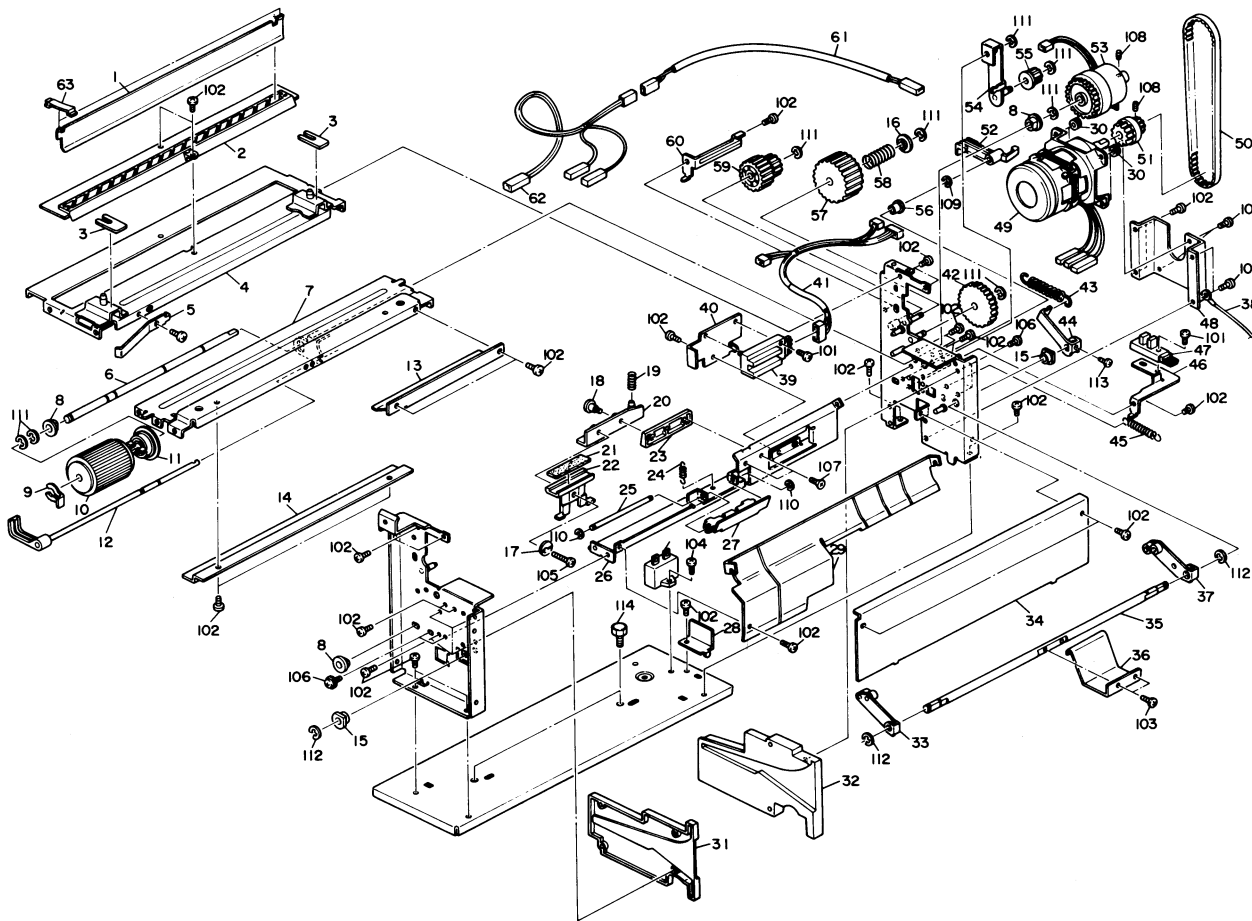
Index No.	Parts No.	Description	Q'ty Per Assembly
34	A008 4715	Paper Feed Guide	1
35	A415 2229	Upper Paper Guide	1
36	5920 2139	Sensor Feeler Cover	1
37	A415 2146	Front Cover - 4th Feed	1
38	5215 2582	Spring	1
39	5215 2579	Shaft	1
40	A008 2593	Lower Arm	1
41	5922 2346	Pad Mounting Plate	1
42	A415 2125	Rear Cassette Holder	1
43	5920 2137	Paper Guide Plate	1
44	A008 2659	Lower Rear Arm	1
45	A008 2656	Lower Lift Arm	1
46	AA14 0081	Shaft	1
47	A008 2657	Lower Front Arm	1
48	5215 1134	Lower Paper Feed Stay - Right	1
49	5920 5202	4th Feed Harness	1
50	5922 2344	Size Sensor Bracket	1
51	5205 5253	Photo Interruptor Pack	1
52	5215 2644	Spring - Friction Pad	1
53	5442 2642	Shoulder Screw - M3	1
54	A008 2555	Arm Pad Ass'y	1
55	5215 2673	Fixing Pad Bracket	1
56	AF03 3003	Friction Pad	1
57	A008 2583	Pad Holder	1
58	AA13 2014	Spacer - Friction Pad Arm	1
59	A008 4811	Front Cassette Holder	1
60	5920 5203	5th Feed Harness - Paper Feed	1
61	5920 2296	Guide Cover	1
62	5413 1882	Stepped Screw	1
63	A415 2273	Guide Rail	1
64	A415 2320	Front Right Cover - 220V/240V	1
64	A415 2322	Front Right Cover - 115V	1
65	5205 5250	L.E.D. Sensor Type S	1
66	5920 2270	Front Guide Plate	1
67	5205 2697	Bushing - Upper Registration Roller	2

Index No.	Parts No.	Description	Q'ty Per Assembly
68	A415 2129	Right Paper Guide	1
69	5205 2698	Relay Roller Spring	2
70	5922 2067	Feeler Shaft	1
71	A008 4804	Sensor Feeler	1
72	5922 2062	Sensor Actuator	1
73	5920 2136	Feed Relay Roller - 4th Feed	1
74	A415 2162	Decal 4th Feed	1
75	5920 2145	Guide Arm	1
76	5920 2140	Lock Stud	1
77	5920 2143	Lock Arm	1
78	A415 2147	4th Feed Grip	1

Index No.	Parts No.	Description	Q'ty Per Assembly
101	0434 0080W	Tapping Pan Head Screw - M4 x 12	
102	0314 0120W	Philips Pan Head Screw - M4 x 12	
103	0313 0100W	Philips Pan Head Screw - M3 x 10	
104	0314 0080W	Philips Pan Head Screw - M3 x 12	
105	0802 5094	Tapping Truss Head Screw - M4 x 8	
106	0313 0120W	Philips Pan Head Screw - M3 x 12	
107	0314 0140W	Philips Pan Head Screw - M4 x 14	
108	0965 4008W	Tapping Screw with Flat Washer - M4 x 8	
109	0574 0040E	Hexagon Headless Set Screw - M4 x 4	
110	0720 0025E	Retaining Ring - M2.5	
111	0720 0030E	Retaining Ring - M3	
112	0720 0050E	Retaining Ring - M5	
113	0720 0060E	Retaining Ring - M6	
114	1204 1280	Push Switch (D)	
115	1105 0159	PCB Stud	
116	1105 0106	Wire Saddle	

3. PAPER BANK III (A415)

April 1, '87



3. PAPER BANK III (A415)

Index No.	Parts No.	Description	Q'ty Per Assembly
1	5922 2334	Lower Guide Plate	1
2	5922 2333	Expansion Relay Feed Guide	1
3	5922 2636	Rubber Seal	2
4	5920 2240	Top Stay	1
5	5920 2246	Spring Plate	1
6	5922 2236	Feed Roller Shaft	1
7	A008 4715	Paper Feed Guide	1
8	5053 0223	Bushing - 8mm	2
9	5215 2621	Snap Ring - M6	1
10	5215 2619	Feed Roller	1
11	5215 2618	Feed Roller Hub	1
12	5922 2340	Paper End Feeler	1
13	5920 2139	Sensor Feeler Cover	2
14	A415 2229	Upper Paper Guide	1
15	5215 2662	Bushing	2
16	5886 2146	Exit Spring Seat	1
17	AA13 2014	Spacer - Friction Pad Arm	1
18	5442 2642	Shoulder Screw - M3	1
19	5215 2644	Spring - Friction Pad	1
20	A008 2555	Arm Pad Ass'y	1
21	AF03 3003	Friction Pad	1
22	A008 2583	Pad Holder	1
23	5215 2673	Fixing Pad Bracket	1
24	5215 2582	Spring	1
25	5215 2579	Shaft	1
26	5922 2346	Pad Mounting Plate	1
27	A008 2593	Lower Arm	1
28	5920 2294	Support Bracket	1
29	5920 2137	Paper Guide Plate	1
30	AA16 1014	Cushion - Motor	2
31	A008 4811	Front Cassette Holder	1
32	A415 2125	Rear Cassette Holder	1
33	A008 2657	Lower Front Arm	1
34	5920 2291	Inner Plate	1
35	AA14 0081	Shaft	1

Index No.	Parts No.	Description	Q'ty Per Assembly
36	A008 2656	Lower Lift Arm	1
37	A008 2659	Lower Rear Arm	1
38	5446 5178	Grounding Wire	1
39	5205 5253	Photointerruptor Pack	1
40	5922 2344	Size Sensor Bracket	1
41	5920 5201	5th Feed Harness - Paper Size	1
42	5922 2099	Gear - 32T	1
43	AA06 0080	Spring - Lower Lift	1
44	A008 2664	Pressure Arm	1
45	5920 2264	Spring - Tightener	1
46	5922 2237	Sensor Bracket	1
47	5205 5250	L.E.D. Sensor Type S	1
48	A415 2255	Motor Bracket	1
49	AX01 0007	Drive Motor - AC12W	1
50	5920 2269	Timing Belt - 160 x L	1
51	5920 2256	Motor Pulley	1
52	5215 2626	Paper End Actuator	1
53	AX21 0002	Magnetic Clutch	1
54	5920 2260	Tightener Bracket	1
55	5887 4183	Idler Pulley	1
56	5443 2668	Bushing	1
57	5920 2266	Gear - 34T	1
58	5920 2267	Spring	1
59	5920 2268	Pulley - 13T/24T	1
60	5920 2292	Clutch Stopper	1
61	5920 5221	Relay AC Harness - 115V	1
61	5920 5222	Relay AC Harness - 220/240V	1
62	5920 5220	Bank AC Harness	1
63	5922 2335	Guide Plate Holder	1

Index No.	Parts No.	Description	Q'ty Per Assembly
101	0314 0120W	Philips Pan Head Screw - M4 x 12	
102	0434 0080W	Tapping Screw - M4 x 8	
103	0314 0080W	Philips Pan Head Screw - M5 x 8	
104	0964 4010W	Tapping Screw with Flat Washer - M4 x 10	
105	0313 0120W	Philips Pan Head Screw - M3 x 12	
106	0965 4008W	Tapping Screw with Flat Washer - M4 x 8	
107	0314 0140W	Philips Pan Head Screw - M4 x 14	
108	0574 0050E	Hexagon Headless Set Screw - M4 x 5	
109	0720 0030E	Retaining Ring - M3	
110	0720 0025E	Retaining Ring - M2.5	
111	0720 0050E	Retaining Ring - M5	
112	0720 0060E	Retaining Ring - M6	
113	0313 0100W	Philips Pan Head Screw - M3 x 10	
114	0323 0080W	Philips Sunken Head Screw - M3 x 8	

4. PAPER BANK BOARD (A415)

April 1, '87

SYMBOL No. : PRINTED NUMBER ON THE BOARD
INDEX No. : REFERENCE NUMBER OF NEXT PAGE

CONNECTOR

SYMBOL NO.	INDEX NO.
CN951	105
CN952	101
CN953	102
CN954	109
CN955	108
CN956	104
CN957	106
CN958	103
CN959	107

DIODE

SYMBOL NO.	INDEX NO.	SYMBOL NO.	INDEX NO.	SYMBOL NO.	INDEX NO.
R951	110	D961	110		
R952	110	D962	110		
R953	110	D963	110		
R954	110	D964	110		
R955	110	D965	110		
R956	110	D966	110		
R957	110	D967	110		
R958	110	D968	111		
R959	110	D969	111		
R960	110	D970	111		

4. PAPER BANK BOARD (A415)

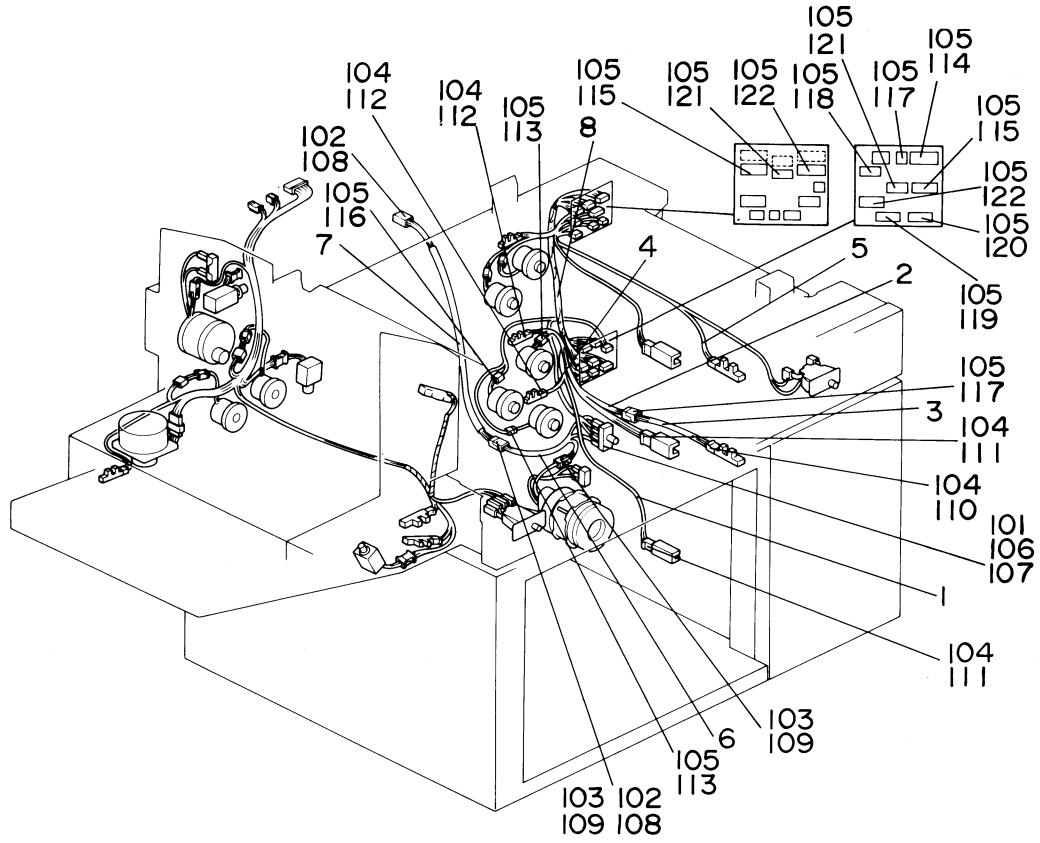
April 1,'87

Index No.	Parts No.	Description	Q'ty Per Assembly
*	5920 5101	Paper Bank Board	1
101	1102 2365	Connector - 6P	
102	1102 2366	Connector - 8P	
103	1103 1726	Connector - 4P	
104	1103 1729	Connector - 7P	
105	1103 1731	Connector - 9P	
106	1103 1739	Connector - 3P	
107	1103 1756	Connector - 6P	
108	1103 1757	Connector - 7P	
109	1103 1758	Connector - 8P	
110	1401 0825	Diode - 1SS176	
111	1402 0467	Diode - S5566G	

Index No.	Parts No.	Description	Q'ty Per Assembly

5. PAPER BANK HARNESS (A415)

April 1,'87



5. PAPER BANK HARNESS (A415)

April 1,'87

Index No.	Parts No.	Description	Q'ty Per Assembly
1	5920 5201	5th Feed Harness - Paper Size	1
2	5920 5202	4th Feed Harness	1
3	5920 5203	5th Feed Harness - Paper Feed	1
4	5920 5204	5th Feed Harness	1
5	5920 5210	Expansion Relay Harness	1
6	5920 5220	Bank AC Harness	1
7	5920 5221	Relay AC Harness - 115V	1
7	5920 5222	Relay AC Harness - 220/240V	1
8	5922 5200	Interface Harness	1
101	1100 1172	Fastening Receptacle	
102	1100 1239	Pin - Mate-N-Lock	
103	1100 1241	Socket - Mate-N-Lock	
104	1100 1249	Receptacle Terminal	
105	1100 1327	Contact	
106	1102 1402	Receptacle Housing - 1P	
107	1102 1404	Receptacle Housing	
108	1102 1507	Connector - 2P	
109	1102 1515	Connector - 2P	
110	1102 1620	Receptacle Housing - 3P	
111	1102 1623	Receptacle Housing - 7P	
112	1102 1786	Connector - 3P	
113	1102 1910	Connector - 2P	
114	1102 1915	Connector - 7P	
115	1102 1917	Connector - 9P	
116	1102 1924	Connector - 2P	
117	1102 1925	Connector - 3P	
118	1102 1942	Connector - 6P	
119	1102 1943	Connector - 7P	
120	1102 1944	Connector - 8P	

Index No.	Parts No.	Description	Q'ty Per Assembly
121	1102 2367	Connector - 6P	
122	1102 2368	Connector - 8P	

PARTS INDEX

Parts No.	Description	Page and Index No.
A415 1210	Expansion Relay Unit	3 - *
A415 2125	Rear Cassette Holder	5-42
A415 2125	Rear Cassette Holder	7-32
A415 2129	Right Paper Guide	5-68
A415 2146	Front Cover - 4th Feed	5-37
A415 2147	4th Feed Grip	5-78
A415 2162	Decal 4th Feed	5-74
A415 2229	Upper Paper Guide	5-35
A415 2229	Upper Paper Guide	7-14
A415 2252	Left Paper Guide	5 - 2
A415 2255	Motor Bracket	7-48
A415 2273	Guide Rail	5-63
A415 2320	Front Right Cover - 220V/240V	5-64
A415 2322	Front Right Cover - 115V	5-64
A415 2330	Rear Right Cover - 220V/240V	5-33
A415 2335	Rear Right Cover - 115V	5-33
A415 2392	Relay Feed Guide	3 - 5
A415 2431	Guide Plate Lever	3-12
A415 2450	Rear Cover - 220V/240V	5-32
A415 2455	Rear Cover - 115V	5-32
A415 4226	Multi-Lingual Decal	3 - *
A415 8610	Installation Procedure - English	3 - *
A415 8625	Installation Procedure - 5 Languages	3 - *

Parts No.	Description	Page and Index No.
A008 2555	Arm Pad Ass'y	5-54
A008 2555	Arm Pad Ass'y	7-20
A008 2583	Pad Holder	5-57
A008 2583	Pad Holder	7-22
A008 2593	Lower Arm	5-40
A008 2593	Lower Arm	7-27
A008 2656	Lower Lift Arm	5-45
A008 2656	Lower Lift Arm	7-36
A008 2657	Lower Front Arm	5-47
A008 2657	Lower Front Arm	7-33
A008 2659	Lower Rear Arm	5-44
A008 2659	Lower Rear Arm	7-37
A008 2664	Pressure Arm	5-30
A008 2664	Pressure Arm	7-44
A008 4715	Paper Feed Guide	5-34
A008 4715	Paper Feed Guide	7 - 7
A008 4804	Sensor Feeler	3-15
A008 4804	Sensor Feeler	5-71
A008 4811	Front Cassette Holder	5-59
A008 4811	Front Cassette Holder	7-31
AA06 0080	Spring - Lower Lift	5-29
AA06 0080	Spring - Lower Lift	7-43
AA13 2014	Spacer - Friction Pad Arm	5-58
AA13 2014	Spacer - Friction Pad Arm	7-17
AA14 0081	Shaft	5-46
AA14 0081	Shaft	7-35
AA16 1014	Cushion - Motor	7-30
AF02 0025	Expansion Relay Roller	3 - 1
AF03 3003	Friction Pad	5-56
AF03 3003	Friction Pad	7-21
AX01 0007	Drive Motor - AC12W	7-49
AX21 0002	Magnetic Clutch	5-21
AX21 0002	Magnetic Clutch	7-53

Parts No.	Description	Page and Index No.
5053 0223	Bushing - 8mm	5 - 13
5053 0223	Bushing - 8mm	7 - 8
5053 0447	Bushing - M6	3 - 2
5205 2697	Bushing - Upper Registration Roller	5-67
5205 2698	Relay Roller Spring	5-69
5205 5250	L.E.D. Sensor Types	3-17
5205 5250	L.E.D. Sensor Type S	5-26
5205 5250	L.E.D. Sensor Type S	5-65
5205 5250	L.E.D. Sensor Type S	7-47
5205 5253	Photo Interruptor Rack	5-51
5205 5253	Photointerruptor Pack	7-39
5215 1134	Lower Paper Feed Stay - Right	5-48
5215 2579	Shaft	5-39
5215 2579	Shaft	7-25
5215 2582	Spring	5-38
5215 2582	Spring	7-24
5215 2618	Feed Roller Hub	5-17
5215 2618	Feed Roller Hub	7-11
5215 2619	Feed Roller	5-18
5215 2619	Feed Roller	7-10
5215 2621	Snap Ring - M6	5-19
5215 2621	Snap Ring - M6	7 - 9
5215 2626	Paper End Actuator	5-23
5215 2626	Paper End Actuator	7-52
5215 2634	Paper Feed Clutch Holder	3 - 7
5215 2644	Spring - Friction Pad	5-52
5215 2644	Spring - Friction Pad	7-19
5215 2662	Bushing	5-31
5215 2662	Bushing	7-15
5215 2673	Fixing Pad Bracket	5-55
5215 2673	Fixing Pad Bracket	7-23
5403 2617	Bushing - Cleaning Roller	3 - 8
5403 2617	Bushing - Cleaning Roller	3-14
5413 1882	Stepped Screw	5-62
5419 5714	Stepped Screw - M4	3-21

Parts No.	Description	Page and Index No.
5442 2642	Shoulder Screw - M3	5-53
5442 2642	Shoulder Screw - M3	7-18
5443 2668	Bushing	5-24
5443 2668	Bushing	7-56
5446 5178	Grounding Wire	7-38
5886 2146	Exit Spring Seat	7-16
5887 4183	Idler Pulley	7-55
5920 2136	Feed Relay Roller - 4th Feed	5-73
5920 2137	Paper Guide Plate	5-43
5920 2137	Paper Guide Plate	7-29
5920 2139	Sensor Feeler Cover	5-36
5920 2139	Sensor Feeler Cover	7-13
5920 2140	Lock Stud	5-76
5920 2143	Lock Arm	5-77
5920 2144	Spring - Lock	5-25
5920 2145	Guide Arm	5-75
5920 2151	Actuator Plate	5-28
5920 2240	Top Stay	7 - 4
5920 2246	Spring Plate	7 - 5
5920 2251	Feed Relay Drive Roller	5 - 3
5920 2256	Motor Pulley	7-51
5920 2260	Tightener Bracket	7-54
5920 2264	Spring - Tightener	7-45
5920 2266	Gear - 34T	7-57
5920 2267	Spring	7-58
5920 2268	Pulley - 13T/24T	7-59
5920 2269	Timing Belt - 160 x L	7-50
5920 2270	Front Guide Plate	5-66
5920 2279	Bank Docking Bracket	5 - 8
5920 2280	Rear Side Plate - 4th Feed	5 - 6
5920 2291	Inner Plate	7-34
5920 2292	Clutch Stopper	7-60
5920 2293	Nylon Washer	5-14
5920 2294	Support Bracket	7-28
5920 2296	Guide Cover	5-61

Parts No.	Description	Page and Index No.
5920 2310	4th Feed Upper Stay	5 - 5
5920 2340	Left Cover	5 - 1
5920 2395	Front Feed Guide Shaft	3-20
5920 2396	Rear Feed Guide Shaft	3 - 4
5920 2418	Mylar Seal - Guide Plate	3-19
5920 2421	Expansion Relay Drive Roller	3 - 9
5920 2430	Guide Plate Bushing	3-11
5920 2432	Spring - Guide Plate	3-13
5920 2433	Spring - Guide Plate	3-18
5920 5101	Paper Bank Board	5 - 9
5920 5101	Paper Bank Board	9 - *
5920 5201	5th Feed Harness - Paper Size	7-41
5920 5201	5th Feed Harness - Paper Size	11 - 1
5920 5202	4th Feed Harness	5-49
5920 5202	4th Feed Harness	11 - 2
5920 5203	5th Feed Harness - Paper Feed	5-60
5920 5203	5th Feed Harness - Paper Feed	11 - 3
5920 5204	5th Feed Harness	5 - 7
5920 5204	5th Feed Harness	5-10
5920 5204	5th Feed Harness	11 - 4
5920 5210	Expansion Relay Harness	3-10
5920 5210	Expansion Relay Harness	11 - 5
5920 5220	Bank AC Harness	7-62
5920 5220	Bank AC Harness	11 - 6
5920 5221	Relay AC Harness - 115V	7-61
5920 5221	Relay AC Harness - 115V	11 - 7
5920 5222	Relay AC Harness - 220/240V	7-61
5920 5222	Relay AC Harness - 220/240V	11 - 7
5922 2062	Sensor Actuator	3 - 6
5922 2062	Sensor Actuator	5-72
5922 2067	Feeler Shaft	3-16
5922 2067	Feeler Shaft	5-70
5922 2099	Gear - 32T	5-22
5922 2099	Gear - 32T	7-42
5922 2236	Feed Roller Shaft	5-16

Parts No.	Description	Page and Index No.
5922 2236	Feed Roller Shaft	7 - 6
5922 2237	Sensor Bracket	5-27
5922 2237	Sensor Bracket	7-46
5922 2333	Expansion Relay Feed Guide	7 - 2
5922 2334	Lower Guide Plate	7 - 1
5922 2335	Guide Plate Holder	7-63
5922 2340	Paper End Feeler	5-20
5922 2340	Paper End Feeler	7-12
5922 2344	Size Sensor Bracket	5-50
5922 2344	Size Sensor Bracket	7-40
5922 2346	Pad Mounting Plate	5-41
5922 2346	Pad Mounting Plate	7-26
5922 2636	Rubber Seal	7 - 3
5922 2670	Expansion Docking Plate	5-11
5922 2671	Expansion Docking Bracket	5-15
5922 5200	Interface Harness	5 - 4
5922 5200	Interface Harness	11 - 8
5922 5300	Relay Feed Clutch	3 - 3
5922 5300	Relay Feed Clutch	5-12

Parts No.	Description	Page and Index No.
0313 0040W	Philips Pan Head Screw - M3 x 4	3-108
0313 0100W	Philips Pan Head Screw - M3 x 10	5-103
0313 0100W	Philips Pan Head Screw - M3 x 10	7-113
0313 0120W	Philips Pan Head Screw - M3 x 12	5-106
0313 0120W	Philips Pan Head Screw - M3 x 12	7-105
0314 0060W	Philips Pan Head Screw - M4 x 6	3-101
0314 0080W	Philips Pan Head Screw - M3 x 12	5-104
0314 0080W	Philips Pan Head Screw - M5 x 8	7-103
0314 0120W	Philips Pan Head Screw - M4 x 12	3-103
0314 0120W	Philips Pan Head Screw - M4 x 12	5-102
0314 0120W	Philips Pan Head Screw - M4 x 12	7-101
0314 0140W	Philips Pan Head Screw - M4 x 14	5-107
0314 0140W	Philips Pan Head Screw - M4 x 4	7-107
0323 0080W	Philips Sunken Head Screw - M3 x 8	7-114
0434 0080W	Tapping Pan Head Screw - M4 x 12	3-102
0434 0080W	Tapping Pan Head Screw - M4 x 12	5-101
0434 0080W	Tapping Screw - M4 x 8	7-102
0574 0040E	Hexagon Headless Set Screw - M4 x 4	3-107
0574 0040E	Hexagon Headless Set Screw - M4 x 4	5-109
0574 0050E	Hexagon Headless Set Screw - M4 x 5	7-108
0720 0025E	Retaining Ring - M2.5	5-110
0720 0025E	Retaining Ring - M2.5	7-110
0720 0030E	Retaining Ring - M3	5-111
0720 0030E	Retaining Ring - M3	7-109
0720 0050E	Retaining Ring - M5	3-106
0720 0050E	Retaining Ring - M5	5-112
0720 0050E	Retaining Ring - M5	7-111
0720 0060E	Retaining Ring - M6	3-105
0720 0060E	Retaining Ring - M6	5-113
0720 0060E	Retaining Ring - M6	7-112
0720 0080E	Retaining Ring - M3	3-104
0802 5094	Tapping Truss Head Screw - M4 x 8	5-105
0964 4010W	Tapping Screw with Flat Washer - M4 x 10	7-104
0965 4008W	Tapping Screw with Flat Washer - M4 x 8	5-108
0965 4008W	Tapping Screw with Flat Washer - M4 x 8	7-106

Parts No.	Description	Page and Index No.
1100 1172	Fastening Receptacle	11-101
1100 1239	Pin - Mate-N-Lock	11-102
1100 1241	Socket - Mate-N-Lock	11-103
1100 1249	Receptacle Terminal	11-104
1100 1327	Contact	11-105
1102 1402	Receptacle Housing - 1P	11-106
1102 1404	Receptacle Housing	11-107
1102 1507	Connector - 2P	11-108
1102 1515	Connector - 2P	11-109
1102 1620	Receptacle Housing - 3P	11-110
1102 1623	Receptacle Housing - 7P	11-111
1102 1786	Connector - 3P	11-112
1102 1910	Connector - 2P	11-113
1102 1915	Connector - 7P	11-114
1102 1917	Connector - 9P	11-115
1102 1924	Connector - 2P	11-116
1102 1925	Connector - 3P	11-117
1102 1942	Connector - 6P	11-118
1102 1943	Connector - 7P	11-119
1102 1944	Connector - 8P	11-120
1102 2365	Connector - 6P	9-101
1102 2366	Connector - 8P	9-102
1102 2367	Connector - 6P	11-121
1102 2368	Connector - 8P	11-122
1103 1726	Connector - 4P	9-103
1103 1729	Connector - 7P	9-104
1103 1731	Connector - 9P	9-105
1103 1739	Connector - 3P	9-106
1103 1756	Connector - 6P	9-107
1103 1757	Connector - 7P	9-108
1103 1758	Connector - 8P	9-109
1105 0106	Wire Saddle	5-116
1105 0159	PCB Stud	5-115
1204 1280	Push Switch (D)	5-114
1401 0825	Diode - 1SS176	9-110

Parts No.	Description	Page and Index No.
1402 0467	Diode - S5566G	9-111

Parts No.	Description	Page and Index No.
-----------	-------------	--------------------